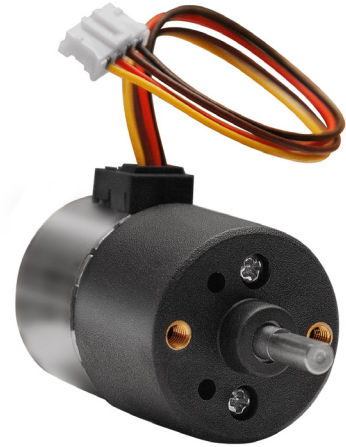


series

SM155

STEP MOTOR 25L48B09
with 155 gearbox

- High Torque
- Low noise
- Small size



TECHNICAL DATA

Motor Step Angle	7,5°	full step	Nominal voltage	12V
Number of Phases	2	bipolar	Driver voltage range	3,6 - 36V
Insulation resistance	100 MΩ	500Vdc	Max axial/radial shaft load	5N/10N
Insulation class	E		Max allowed torque	25 Ncm
Coil Resistance/Induction	9Ω/10mH		Max current (continuous)	250 mA
Max temp. (motor housing)	60 °C		Max current (intermittent)	500 mA
Rec. temp. (motor housing)	35 - 45 °C		Operating temperature	-25 °C/+65 °C
			Approx. weight	60g

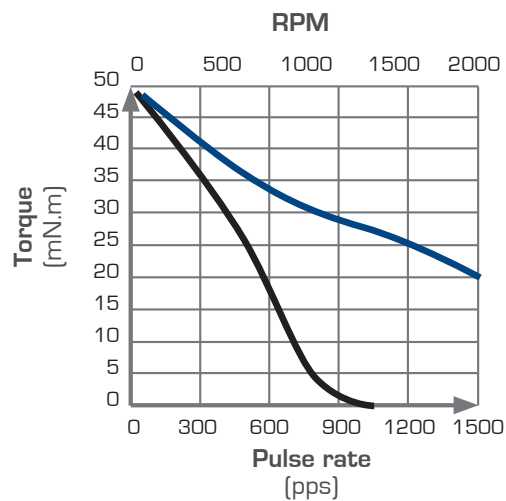
PART NUMBER	Ratio (x:1)	Length mm	Holding Torque mNm	Max Speed (ref.) RPM
SM155.25L.10	10	39,5	400	150
SM155.25L.21	20,8	39,5	400	72
SM155.25L.43	43,3	44,5	400	35
SM155.25L.90	90,3	44,5	400	17

SM155

Motor Dynamic Torque Curves 24V/0,5A

Conditions: Bi-polar Constant Current Driver
Driver: AMIS 30522
Mode: Full Step

— Pull in torque — Pull out torque



SM155

Mechanical dimensions

