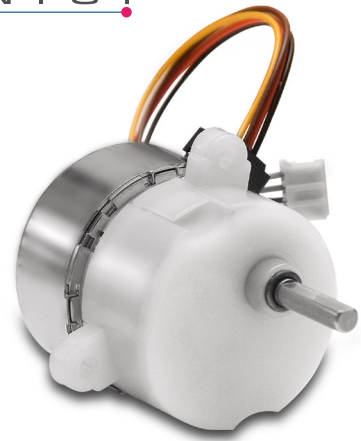


series

SM138

**STEP MOTOR 35S48B07
with 138 gearbox**



- High Torque
- Low noise
- Small size

TECHNICAL DATA

Motor Step Angle	7,5°	full step	Nominal voltage	12V
Number of Phases	2	bipolar	Driver voltage range	3,75 - 36V
Insulation resistance	100 MΩ	500Vdc	Max axial/radial shaft load	5N/20N
Insulation class	E		Max allowed torque	50 Ncm
Coil Resistance/Induction	7,5Ω/10mH		Max current (continuous)	250 mA
Max temp. (motor housing)	60 °C		Max current (intermittent)	500 mA
Rec. temp (motor housing)	35-45 °C		Operating temperature	-20 °C/ +65 °C
			Approx. weight	90g

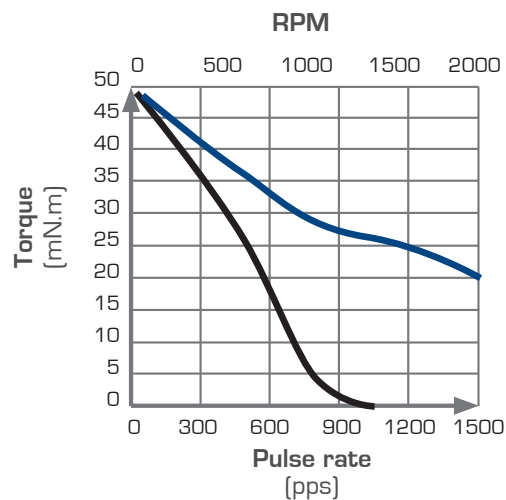
PART NUMBER	Ratio (x:1)	Length mm	Holding Torque mNm	Max Speed (ref.) RPM
SM138.35S.12	12,25	35	600	122
SM138.35S.21	21,14	35	800	71
SM138.35S.36	35,73	35	800	42
SM138.35S.72	71,54	35	800	21
SM138.35S.149	149,05	35	800	10
SM138.35S.208	208,66	35	800	7
SM138.35S.608	608,61	35	800	2,5
SM138.35S.1470	1470,82	35	800	1

SM138

Motor Dynamic Torque Curves 24V/0,5A

Conditions: Bi-polar Constant Current Driver
Driver: AMIS 30522
Mode: Full Step

— Pull in torque — Pull out torque



SM138

Mechanical dimensions

